

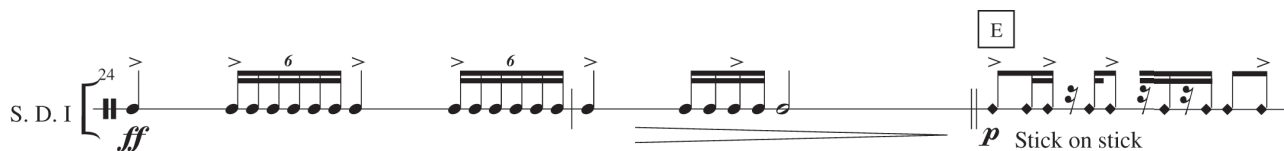
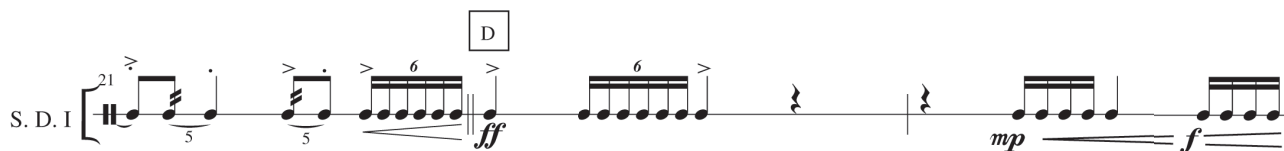
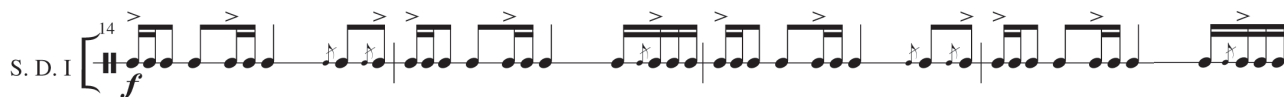
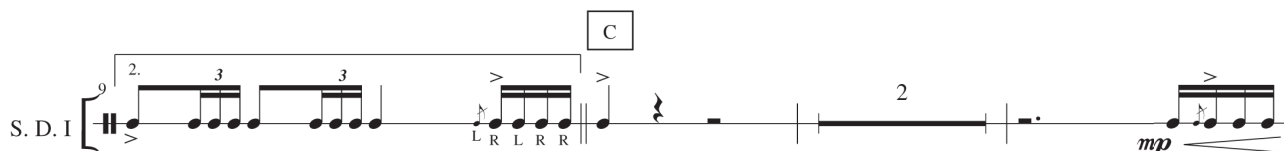
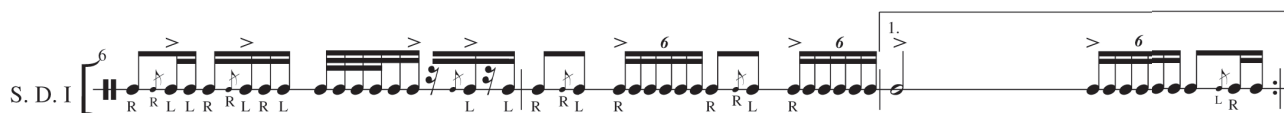
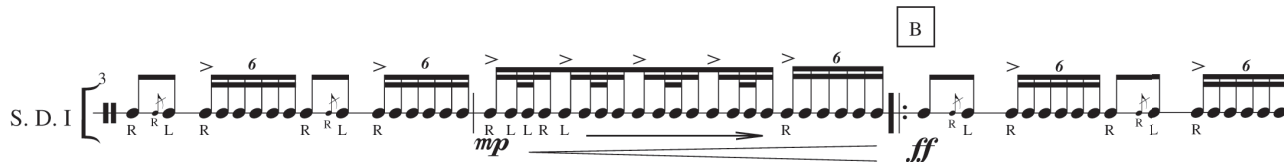
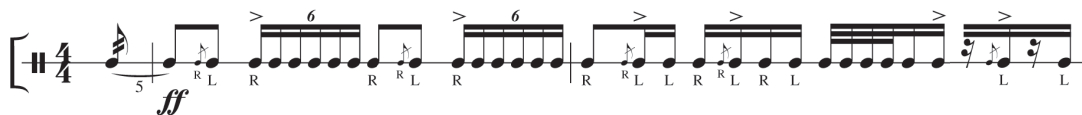
REGULUS

na kwintet marszowy

Krystian Skubała

A Allegro ♩ = ca.120 (110-120)

Snare Drum I
Werbel I



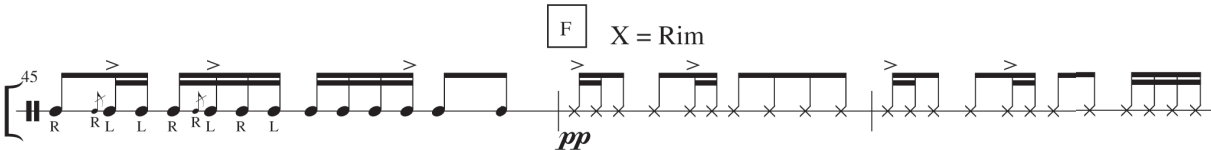
S. D. I  *cresc.* *mp*


S. D. I  *f*

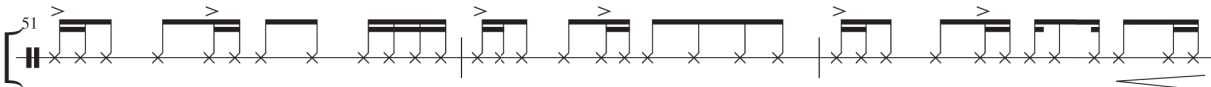
S. D. I  *più* *f*

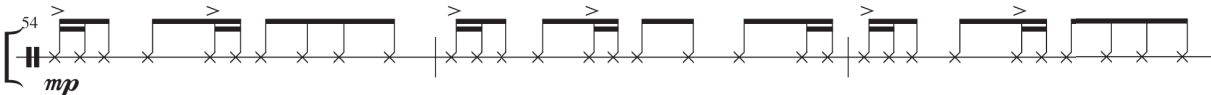
S. D. I  *f* *più*

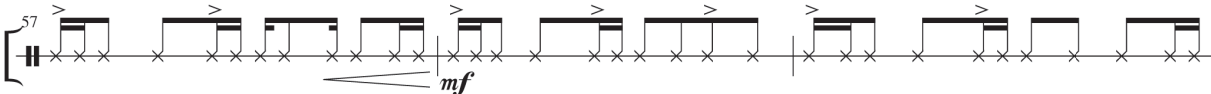
S. D. I  *ff* *f*

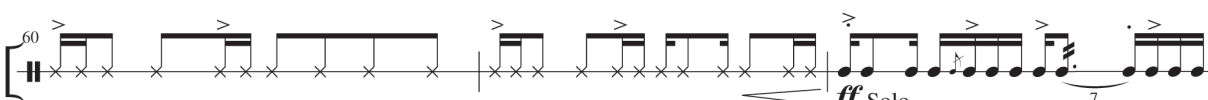
S. D. I  *pp* *f*


S. D. I  *p* *f*

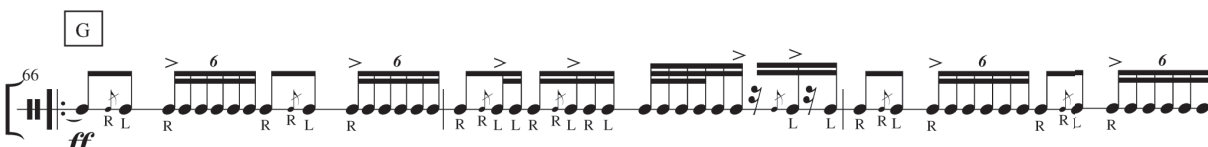
S. D. I  *f* *p*

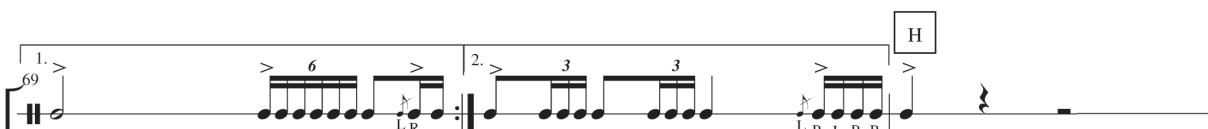
S. D. I  *mp* *f*

S. D. I  *mf* *f*


S. D. I  ***ff*** Solo 7


S. D. I  ***mp*** 5 5 17

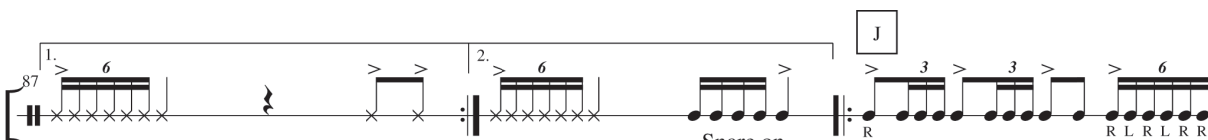
G
S. D. I  ***ff*** 6 6 6 6 6 6

S. D. I  **H** 1. 2. 3 3

S. D. I  3 3 6 3 3 6

S. D. I  ***pp*** 3 3 3 3 3 3

S. D. I  ***ff*** 3 3 3 3 3 3

J
S. D. I  ***ff*** 6 6 6 6 6 6

S. D. I  3 3 6 3 3 6

K

S. D. I *f*

L

S. D. I *ff*

M

S. D. I *mp* *ff*

N

S. D. I *mp*

O

S. D. I *f* *più*

2016

Detailed description of the musical score: The score is for a single instrument, S. D. I, in 2/4 time. It consists of nine staves of music. Section K (measures 93-98) starts with a forte (f) dynamic and features rapid sixteenth-note runs. Section L (measures 96-100) includes a first ending bracket and a fortissimo (ff) dynamic. Section M (measures 101-105) begins with mezzo-piano (mp) and transitions to fortissimo (ff). Section N (measures 106-108) includes a measure with a fermata and a '2' above it, followed by a mezzo-piano (mp) dynamic. Section O (measures 111-120) starts with a forte (f) dynamic and includes the word 'più' (faster). The score concludes with a double bar line and the year '2016'.